

737,471 SF

Distribution/Fulfillment Center Equipment For Sale



G&P CONSTRUCTION

## Turn Key Ecommerce Distribution Center

3051 Creekside Pky



Lockbourne, OH

### Material Handling Equipment:

- 3-Story Pick Module: Great for E-commerce and Retail applications
- Intelligrated Conveyor System and Sortation
- Crown Lift Equipment
- Facility Equipment such as building generators, compressors, transfer switches etc.
- Fully Furnished Office and Equipment
- IT Equipment
- Various Packing Equipment - Including case sealers, carton erectors, tapers and more

### Advantages:

- Save money with used materials
- Save time by with turn-key building offering immediate operational start
- Reconfiguration available on request

### Land Information:

Land Acres	37.00 AC
Bldg FAR	.46
Zoning	PID, Village of Obetz
Land SF	1,611,720 SF



Scan Here for  
our list of inventory:



Scan Here for  
Building Details  
(Drawing, Specs & Photos):



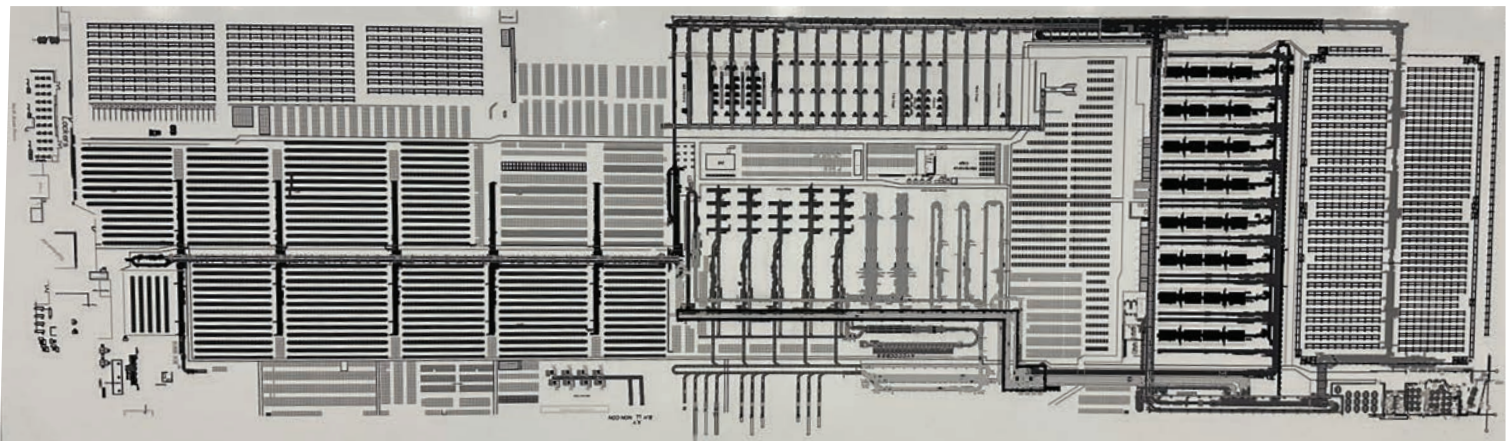
## Distribution Advantages:

- With 2.1 million people and counting, the 11 county Columbus Region is one of the fastest-growing metropolitan areas in the United States. This growth provides a strong workforce for regional employers, including those in the Rickenbacker area.
- Only  $\pm 13$  miles to John Glenn Columbus Airport with multiple flights daily to all major markets in the country and air cargo service from Capital Cargo, DHL, FedEx and UPS
- Located  $\pm 7$  to Rickenbacker Airport offers freight hubs in Asia, Europe, and the Middle East are easily accessible via Rickenbacker International Airport, which offers scheduled import and export services.
- Situated between New York, Chicago, Toronto, and Atlanta, a one-day truck drive to nearly half of the U.S. and one-third of the Canadian populations.
- With access to interstates and area highways, multiple trucking companies and brokerages find it easy to reach more than 45 overnight service points.



## ALL INCLUSIVE PROVIDER OF MHE SOLUTIONS

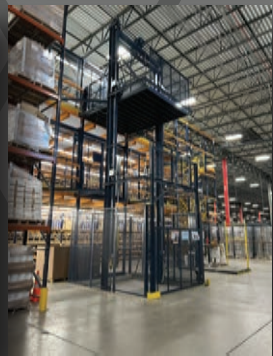
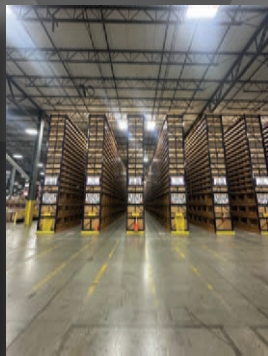
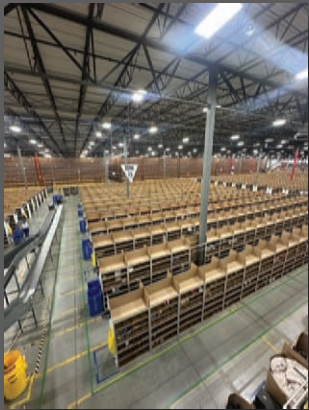
- SYSTEMS
- LIQUIDATION
- WHITE BOX
- EXPERTISE
- CONSTRUCTION





## Building Information:

<b>Year Built</b>	Dec 2006	<b>RBA</b>	737,471 SF
<b>Tenancy</b>	Single	<b>Stories</b>	1
<b>Owner Occup</b>	No	<b>Typical Floor Class</b>	737,471 SF
<b>Clear Height</b>	34'	<b>Docks</b>	A
<b>Columns</b>	48'w x 50'd	<b>Drive Ins</b>	75 ext
<b>Floor Load</b>	707,010 SF	<b>Cross Docks</b>	6 to./ 12'w x 14'h
<b>Floor Thickness</b>	4000 lbs/SF	<b>Levelers</b>	Yes
<b>Sprinklers</b>	7"	<b>Construction</b>	Yes
<b>Rail Spots</b>	ESFR	<b>Truck Wells</b>	Reinforced Concrete
<b>Cranes</b>	None	<b>Truck Court</b>	Yes
			120'



### CONTACT:

**NICK GOREY**

+1 (440) 539-7065

[nick@gandpconstruction.com](mailto:nick@gandpconstruction.com)



**G&P CONSTRUCTION**

+1 (855) 494-4832

[gandpconstruction.com](http://gandpconstruction.com)